



Women of Saint Michael

WOMEN OF SAINT MICHAEL

2013-2014

Saint Michael and All Angels Episcopal Church

Women of Saint Michael Board 2013-2014

Executive Committee

Jan Baldwin, President
Whitney Grogan,
President Elect
Monique Black
Rose Fitzgerald
Patti Flowers, MAL
Elizabeth Gambrell
Sylvia Hood
Elizabeth Keogh
Hallie Lawrence
Susan McSherry, MAL
Maria Martin
Carin Moeller
Laurel Page
Pat Prestidge, MAL
Linda Secrest, MAL
Debbie Shuey
Tricia Stewart, MAL

Clergy Advisor

Lisa Flores

Committee Chairmen

Adele Broughton
Christi Blakelock
Jean Baty
Pam Busbee
Squeaky Connolly
Austen Crossley
Beverly Ensslen
Marilyn Harbison
Helen Holman
Cissy Humphrey
Kate Juett
Mary Kardell
Kathy Kelley
Elizabeth Keogh
Laura Noe
Courtney Peeler
Kitty Peeler
Gigi Poglitsch
Shelly Vescovo
Sherry Wilson

Vestry Representatives

Christine Ashmore
Kathy Jenevein
Stephanie Pearson
Sallie Plummer
Nancy Skochdopole
Margaret Spellings
Donell Wiggins
Sheryl Wylie

Celebrating the Angels Among Us and Our Community

Please plan to join us for some or all of these outstanding programs.

Wednesday, September 11, 2013, 11:30 a.m.

Increasingly nonprofit organizations are using business models and earned income strategies to achieve their missions. **Chad Houser, Executive Director and Chef, Cafe Momentum and Board Member, Social Enterprise Alliance North Texas Chapter** will discuss how Café Momentum, a social enterprise program of Youth Village Resources of Dallas, provides culinary and restaurant training that transforms the lives of our community's most at-risk youth.

Thursday, October 10, 2013, 11:30 a.m.

Dottie Indyke, Executive Director, Creativity for Peace will discuss how its Young Leaders Program simultaneously works with young Palestinian and Israeli women on collaborative leadership and peacemaking so that they may take on significant roles in their families, communities and countries that advance peaceful coexistence. Joining Dottie will be three young women in the program who will share their stories: one Jewish Israeli, one Arab Israeli and one Arab from the West Bank.

Wednesday, November 13, 2013, 11:30 a.m.

In Dallas County, 20% of households struggle to feed their families. Compounding the problem, the economically depressed and underserved southern sector has been labeled a food desert where grocery stores and access to fresh, affordable food are rare. **Michael J. Sorrell, Esq., President of Paul Quinn College**, will discuss an innovative response to both issues which transformed the college's football field into the two-acre, student-run "WE Over ME Farm".

Wednesday, January 15, 2014, 11:30 a.m.

Investing in women is widely acknowledged as one of the surest and most effective ways to create lasting social change. **Roslyn Dawson Thompson, President and CEO, Dallas Women's Foundation and Jennifer Sampson, President and CEO, United Way of Metropolitan Dallas** will participate in a panel discussion on women investing in women: harnessing the philanthropic influence of women to empower and create opportunities for other women, their families, and their communities.

Mission Outreach Opportunities

We do Mission and Outreach at Saint Michael:

- Because we are trying to "do God's will on earth as in heaven." (Matthew 6.10)
- Because no one should be hungry, naked, sick, thirsty, or a stranger (Matthew 25.31-46)
- Because we believe that if one member of humanity suffers we all suffer (I Corinthians 12.26)
- Because we believe that the summary of the Law is to love your neighbor (Romans 13.10. Galatians 5.14). We define love as an untiring commitment to be WITH someone and FOR someone until they realize God's image in them! ---Adapted from Scot McKnight
- Because to whom much is given, much will be required (Luke 12.48)
- Because whatever you do to the least of these, you do to Jesus (Matthew 25.40)
- Because we believe we need to serve as Jesus served (washing feet—John 13)
- Because we believe that we can be God's hands and feet in this world
- Because we believe that we do for one what we wish we could do for all
- Because we believe actions speak louder than words
- Because we believe that when we see an opportunity to serve---we do it!
- Because we believe that we can become HOPE-BEARERS to those who lack hope
- Because we believe that together we can accomplish incredible things

If you believe even one of these statements, then have we got a deal for you!

Check out the Saint Michael Mission and Outreach webpage to discover a way to take the next step in your spiritual life, <http://www.saintmichael.org/mo/>

President's Message

The Women of Saint Michael is a great way to get to know women of all ages who are members of our church. In fact, if you are a member of Saint Michael and All Angels, you are ALREADY a member of this fun and dynamic organization! If you are already involved, we can't wait to see you in September, and if you would like to become involved, we'd truly love your participation! We have luncheons in the Parish Hall in September, October, November, and January, and we will have our annual year-end celebration luncheon in May. We also have numerous volunteer activities, a great Mardi Gras party in February, and much more, as outlined in this newsletter."

Please make your Luncheon Program season ticket reservations TODAY by completing the form on the back page of this newsletter. Luncheon programs will include local community leaders and "angels among us" who work diligently to make our community a better place to live and work. We hope you will also consider inviting your friends to be your guest at these luncheons for only \$10.00 each.

Please also consider becoming a volunteer at the St. Michael's Women's Exchange. For over fifty years, many dedicated volunteers have donated their time and talent to the Exchange, which is an amazing gift shop located in Highland Park Village. This past year, the profits from the Exchange coupled with the funds raised at the Parish Party enabled the WOSM Gifts Committee to grant \$506,000 to more than 90 non-profit agencies in our community. The Exchange and Parish Party volunteers should be so very proud of this impressive legacy.

As this year's President of the WOSM, I look forward to seeing you at our events throughout the year...renewing long-time friendships, and hopefully getting to know even more of the special women in our Parish. Please feel free to give me a call, or send me an email...so that I can know what I can do to make your year with us meaningful and fun.

Warmest Regards,
Jan Baldwin

2013-2014 President, Women of Saint Michael
janisrbaldwin@gmail.com
214-244-3408



Women of Saint Michael

St. Mary's Guild

Saint Mary's Guild unites women of the parish in a program of worship, service and fellowship. Our primary service focus is the Bake Table in the Lanai each Sunday during the morning services from September through May. One cupcake, cookie and cake slice at a time – we raise funds and distribute all proceeds to Genesis Women's Shelter, Hopeful Solutions, and Family Outreach. Women of all generations participate in the monthly bake teams.

Members also gather periodically, September through May, for dinner and fellowship with informative and inspirational programs. Please see the Saint Mary's Guild program schedule on the Saint Michael website or in The Sunday News for specific dates and times.

We would love to have you join us and if you do not bake, we can still use your help, so give us a call! For more information, please contact:

Cissy Humphrey, 214-521-4314; Cissy1234@yahoo.com or
LaRee Stein, 214-696-4484; LaRee.Stein@db.com

Meals on Wheels

The Visiting Nurses Association's Meals on Wheels program needs you and your car! Ask a friend to join you one morning a month (Monday through Friday) -- just two hours -- to deliver lunch to the elderly and shut-ins. 4,000 meals are delivered each weekday...if we had more volunteers, more people on the Wait List could be served! Help keep these needy people in their homes -- where they want to be -- and feel the satisfaction of doing God's work! Please call Mary Bartholow, Coordinator at 214-528-5651.

Saint Michael Moms

If you are a mother of young children at Saint Michael and All Angels then Saint Michael Moms is for you! We always have a variety of activities going on such as play dates, classes, and Mom's Nights Out as well as monthly group meetings with informative speakers. Previous topics covered have ranged from "Nutrition and Family Meals" to "Rescuing Our Children From Excess". There is no cost, so if you are interested in joining Saint Michael Moms contact Austen.crossley@gmail.com or visit our table at Homecoming on September 8th!

The Prime Timers

The Prime Timers are an active group of adults, focusing on 50-plus. Our meetings are twice a month, on Thursdays. In-house meetings begin at 10:30, where our programs vary from "one woman plays" to sports writers with the latest scoop on our Dallas teams. All the trips, on the second Thursday, are around the Dallas area, with favorites being the bluebonnets, the latest Kimball and DMA exhibits, and visiting local industries. It's a very congenial and welcoming group, with luncheons following our meetings and trips being the highlight. Everyone is welcome! Questions? Contact Ruth Mason at masondal@sbcglobal.net or 214.373.7984.

Altar Guild

The Altar Guild is a quiet ministry working under the direction of the clergy. It is our duty to see that everything is in its place so that the services can be conducted with order, decency and beauty. We maintain the altar, as well as care for the vestments, linens, vessels, candles, etc. This ministry provides the opportunity to be an integral part of the worship, yet remain behind the scenes.

Members serve on a fifteen-member team, one week out of every five. The commitment is for a Saturday morning meeting, a set up and clean up for a Sunday service, and one weekday duty. Other special services also arise. We are mindful of busy schedules, and trades between team members are common. Commitment is key, however, as we count on each other to be reliable and dependable.

The other part of this ministry is the support we have for each other. We enjoy learning together, as well as laughing together, as we witness an "oopsy" now and then, or even the occasional sin of omission. A special bond of love and friendship exists among this multi-generational group. Getting to know each other and working together in the preparation of the Lord's table is a cherished privilege.

No experience is necessary to join the Altar Guild. Training is provided and new members are supported by experienced members. If you have an interest in this special ministry and would like more information, please contact Laura Noe at smaaaltarguild@gmail.com.

Women's Study Groups

All groups welcome visitors and new members throughout the year.

MONDAY

Unending Conversation, 9:00-10:30 a.m.,
Led by Julia Shoup and Anna Ramey-Walker,
Coke Activities Room

All women are invited to join this inquisitive and welcoming class. The moniker we have chosen for ourselves is "Unending Conversation" from Marcus Borg's *The Heart of Christianity*: "Discerning the heart of Christianity thus involves us in an 'unending conversation'". We urge all new members to read this book for background and perspective. The conversation begins with observations on a portion of a chosen book or a short film viewed in class. The first class is Monday, September 30.

Women of the Spirit, 9:30-11:00 a.m.,
Led by Emily Given and Suzanne Finan, The Edge Room

All women are welcome to this discussion of books selected throughout the year. This group is a great place for fellowship, spiritual growth, and good conversations.

Women and Christianity
12:30-1:30 p.m., Led by Mary Ann Webster and Elizabeth Lang,
Chapel Conference Room

This open group studies and discusses one book each semester to gain insight into personal spiritual growth and gain wisdom from the community. This coming year will also include an exploration of the major themes of the Bible. The first book for 2013 is *Twelve Steps to a Compassionate Life* by Karen Armstrong.

Women-Word-Work,
7:00-8:15 p.m., 1st and 3rd Mondays,
Led by Brenda Sol and Emily Given, The Edge Room

Are you a working woman? Are you craving spiritual connection but know you can't commit to one more thing? Then this is the perfect group for you! Drop in when you can as we share fellowship, snacks, study and prayer. Books are chosen by the group during the year. Bring a friend and join us. There is no preparation. This group meets all 12 months of the year.

TUESDAY

Brown Bag Bible Study, 11:00-12:00 a.m.,
Led by Peggy Carr and Effie McCullough, Coke Act. Room
Each year this group of women discusses a book of the Bible as it applies to their own lives. The study is facilitated by the use of study guides. The book for 2013- 2014 is *Genesis: God's Creative Call* by Charles and Anne Hummal which is available in the Saint Michael Bookshop. There is about 40 minutes of preparation for each class using the study guide.

WEDNESDAY

Women's Spiritual Discussion Group, 7:30-8:30 a.m.,
Led by Shelly Vescovo, Chapel Conference Room
All women who work or for any reason would enjoy a study group in the early morning to energize you as you start your day are welcome. Each week, small portions of a book on spiritual growth and prayer, and at times a relevant novel, are open for interpretation and discussion. This conversational size group meets weekly September-July. The facilitator is Shelly Vescovo, although every member of the group participates in leadership and in choosing reading materials. The first book for this fall is *Boundaries* by Drs. Cloud and Townsend.

A Sacred Journey
5:30 -6:30 pm (and Thursdays 11:30 -12:30)
Led by Marta Holden, Parlor

This open group is an opportunity for women to have an honest and engaging conversation about their faith journey. We select a new book approximately four times a year. A short break is between each book study. If you miss on Wednesday, please come to the Thursday group, 11:30-12:30.

THURSDAY

Community Bible Study, 9:15-10:30 a.m.,
Led by Pamela Theodore, Chapel Conference Room
This is a Bible study group for women of all ages. Every year we are blessed with women with young children, women in middle age, and women who are grandmothers. It is reminiscent of being in a kitchen at the Holidays with so many generations of women cooking and sharing. Class begins with fellowship at 9:15 followed by bible study. This year we will explore the book of Ruth. There is no preparation.

Agencies Supported by WOSM

Through WOSM fundraising events, combined with profits from the Exchange, our Gifts Committee funded the following agencies in 2013:

EDUCATION:

Aberg Center For Literacy
Association for Independent Living
Avance-Dallas
Big Thought
Chase's Place
ChildCareGroup
Circle of Support, Inc.
Communities in Schools Dallas Region
Cornerstone Crossroads Academy
Dallas After School Network
Dallas Center, Inc.
Dallas Community Lighthouse
East Dallas Community Schools
Educational Opportunities, Inc.
English Language Ministry
Foundation for the Education of Young Women
Good Shepherd Community Center
Just Say YES - Youth Equipped to Succeed
Kids' University, The University of Texas
at Dallas
Letot Capital Foundation
LIFT
Mi Escuelaita Preschool
Notre Dame School
Reading & Radio Resource
Services of Hope
St. Simon's After-School
Vickery Meadow Learning Center
Voice of Hope Ministries

HEALTH:

Ability Connection Texas
Agape Clinic
Ark House
Bridge Breast Network
Brother Bill's Helping Hand
Bryan's House
C. C. Young
Camp Summit, Inc
ChristianWorks for Children
Dallas Christian Women's Job Corps
Equest Therapeutic Horsemanship
Healing Hands Ministries
Home Access Fund
Hopeful Solutions
Nexus Recovery Center
Pastoral Counseling Center
Special Camps for Special Kids
Spirit Horse Therapeutic Riding Center
Texas Neurofibromatosis Foundation
Turtle Creek Recovery Center
YMCA - Camp Grady Spruce

POVERTY:

AIDS Services of Dallas
Alley's House
Attitudes & Attire
Austin Street Centre
City Square
Dallas Furniture Bank
Family Gateway, Inc.
Forest Heights Neighborhood Development Corp
Hope Cottage
Hunger Busters
Interfaith Housing Coalition
Network of Community Ministries
North Dallas Shared Ministries
North Texas Food Bank
One Man's Treasure Clothes Closet
Senior Source
Shared Housing Center, Inc.
Shoe Bank
St. Philip's School & Community Center
Stewpot of First Presbyterian Church
Visiting Nurse Association/Meals on Wheels
Vogel Alcove
White Rock Center of Hope
Wilkinson Center

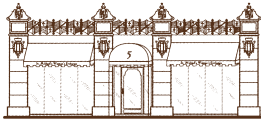
PROTECTIVE SERVICES:

Community Partners of Dallas
CONTACT Crisis Line
Dallas Area Rape Crisis Center
Dallas CASA
Dallas Children's Advocacy Center
Family Compass
Family Place
Genesis Women's Shelter
Human Rights Initiative of North Texas
Jonathan's Place
Mosaic Family Services, Inc.
New Beginning Center, Inc.
New Friends New Life
Our Friends Place
Promise House
Resolana
Youth Village Resources of Dallas

EPISCOPAL RELATED:

Amistad Mission
Jubilee Park & Community Center
Saint Michael Honduras Mission Hospital
St. John of Jerusalem Eye Hospital
The Gathering

St. Michael's Woman's Exchange



St. Michael's Woman's Exchange

5 Highland Park Village • Dallas, TX 75205
Monday – Saturday 9:30 a.m. – 5:00 p.m.

Want to get involved, raise over \$500,000 and have a great time doing it?

Join us at The Exchange!

We are a retail gift store run by volunteers. All proceeds are returned to the community through the Women of Saint Michael's Gift Committee

We need you!

Morning or afternoon shifts are available

For more information contact:

Sylvia Hood – Chair and Debbie Shuey – Chair Elect
214-521-3862 Barbe Cree - Manager
smwe@sbcglobal.net Betsy Bailey - Volunteer Coordinator

Mardi Gras Party

Save The Date! Friday February 28, 2014 for Our **Second Annual Mardi Gras Party** For The Parish! We'll have cajun food, a dynamite band and lots of good fellowship & fun! Laissez Les Bon Temps!!!

Program Reservations

This year our Season Ticket includes five luncheon programs and the two morning retreats. A season ticket reservation is the easiest way to reserve your place at each of these functions. Simply complete the form below and mail it, with a check or credit card information, in the enclosed envelope. Or throughout the year, you may make individual program reservations by emailing Gigi Poglitsch, Reservations Chair, at ggpogs1@att.net prior to each program, and then paying at the door. Guests are always welcome!

We work hard to keep our costs steady and have not increased the season ticket prices in several years. To help cover our group's expenses we offer three underwriting levels. Please consider contributing to the Women of Saint Michael as an "Archangel," "Angel," or "Cherub." We greatly appreciate the extra support as we endeavor to provide quality programming.

Tom Thumb Good Neighbor Program

When you link your **Tom Thumb Reward Card** to our **Good Neighbor Number 4868**, we receive a percentage of all of your expenditures. By shopping at Tom Thumb, you are supporting the Outreach Programs of the Women of Saint Michael! Thank you!!

2013-2014 SEASON TICKET RESERVATION

All Levels Include Five Luncheons and Two Morning Retreats

Please consider contributing at the Archangel, Angel, or Cherub level to help underwrite the expenses of WOSM programming. Thanks to these donations, season ticket prices have not been raised in several years.

Your generosity is appreciated!

- | | |
|---|-------|
| <input type="checkbox"/> Archangel Level (includes underwriting donation) | \$500 |
| <input type="checkbox"/> Angel Level (includes underwriting donation) | \$300 |
| <input type="checkbox"/> Cherub Level (includes underwriting donation) | \$150 |
| <input type="checkbox"/> Active | \$70 |
| <input type="checkbox"/> Senior (65 and Older) | \$60 |

Payment Options:

Check (payable to the Women of Saint Michael) MasterCard Visa AMEX

Credit Card Number: _____ Expiration Date: _____ Security Code: _____

(For MC & Visa, the code is the last 3 digits on back of card; for Amex, the code is the 4 digit number on front of card on right.)

PLEASE PRINT:

Name (as it appears on credit card): _____

Address: _____

Phone: Home: _____ Cell: _____

Email address: _____

Send check/credit card information and reservation form in enclosed envelope to:

Gigi Poglitsch - Reservations Chair – 7318 Elmridge Drive, Dallas, TX 75240

I AM INTERESTED IN BECOMING INVOLVED! Please contact me regarding:

- | | | | | |
|---------------------------------------|---|---|---|---------------------------------------|
| <input type="checkbox"/> Altar Guild | <input type="checkbox"/> Meals on Wheels | <input type="checkbox"/> Bible Study | <input type="checkbox"/> Saint Michael Moms | <input type="checkbox"/> Parish Party |
| <input type="checkbox"/> Prime Timers | <input type="checkbox"/> St. Mary's Guild | <input type="checkbox"/> St. Michael's Woman's Exchange | <input type="checkbox"/> Mission and Outreach | |